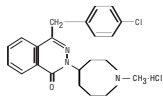


**ASTELIN®**  
(azelastine hydrochloride)  
Nasal Spray, 137 mcg  
AST7065  
IN-023S6-04  
For Intranasal Use Only

**DESCRIPTION**

Astel® (azelastine hydrochloride) Nasal Spray, 137 micrograms (mcg), is an antihistamine formulated as a metered-spray solution for intranasal administration. Azelastine hydrochloride occurs as a white, almost odorless, crystalline powder with a bitter taste. It has a molecular weight of 418.37. It is sparingly soluble in water, methanol, and propylene glycol and slightly soluble in ethanol, octanol, and glycerine. It has a melting point of about 225°C and the pH of a saturated solution is between 5.0 and 5.4. Its chemical name is (+)-1-(2H)-phthalazone, 4-[[4-(chlorophenyl) methyl]-2-(hexahydro-1-methyl-1H-azepin-4-yl)-, monohydrochloride. Its molecular formula is C<sub>22</sub>H<sub>26</sub>ClN<sub>4</sub>O·HCl with the following chemical structure:



Astel® Nasal Spray contains 0.1% azelastine hydrochloride in an aqueous solution at pH 6.8 ± 0.3. It also contains benzalkonium chloride (125 mcg/mL), edetate disodium, hypromellose, citric acid, dibasic sodium phosphate, sodium chloride, and purified water.

After priming, each metered spray delivers a 0.137 mL mean volume containing 137 mcg of azelastine hydrochloride (equivalent to 125 mcg of azelastine base). The bottle can deliver 200 metered sprays.

**CLINICAL PHARMACOLOGY**

Azelastine hydrochloride, a phthalazone derivative, exhibits histamine H<sub>1</sub>-receptor antagonist activity in isolated tissues, animal models, and humans. Astel® Nasal Spray is administered as a racemic mixture with no difference in pharmacologic activity noted between the enantiomers in *in vitro* studies. The major metabolite, desmethylazelastine, also possesses H<sub>1</sub>-receptor antagonist activity.

**Pharmacokinetics and Metabolism**

After intranasal administration, the systemic bioavailability of azelastine hydrochloride is approximately 40%. Maximum plasma concentrations (C<sub>max</sub>) are achieved in 2-3 hours. Based on intravenous and oral administration, the elimination half-life, steady-state volume of distribution, and plasma clearance are 22 hours, 14.5 L/kg, and 0.5 L/h/kg, respectively. Approximately 75% of an oral dose of radiolabeled azelastine hydrochloride was excreted in the feces with less than 10% as unchanged azelastine. Azelastine is oxidatively metabolized to the principal active metabolite, desmethylazelastine, by the cytochrome P450 enzyme system. The specific P450 isozymes responsible for the biotransformation of azelastine have not been identified; however, clinical interaction studies with the known CYP3A4 inhibitor erythromycin failed to demonstrate a pharmacokinetic interaction. In a multiple-dose, steady-state drug interaction study in normal volunteers, cimetidine (400 mg twice daily), a nonspecific P450 inhibitor, raised orally administered mean azelastine (4 mg twice daily) concentrations by approximately 65%.

The major active metabolite, desmethylazelastine, was not measurable (below assay limits) after single-dose intranasal administration of azelastine hydrochloride. After intranasal dosing of azelastine hydrochloride to steady-state, plasma concentrations of desmethylazelastine range from 20-50% of azelastine concentrations. When azelastine hydrochloride is administered orally, desmethylazelastine has an elimination half-life of 54 hours. Limited data indicate that the metabolite profile is similar when azelastine hydrochloride is administered via the intranasal or oral route.

*In vitro* studies with human plasma indicate that the plasma protein binding of azelastine and desmethylazelastine are approximately 88% and 97%, respectively.

Azelastine hydrochloride administered intranasally at doses above two sprays per nostril twice daily for 29 days resulted in greater than proportional increases in C<sub>max</sub> and area under the curve (AUC) for azelastine.

Studies in healthy subjects administered oral doses of azelastine hydrochloride demonstrated linear responses in C<sub>max</sub> and AUC.

**Special Populations**

Following oral administration, pharmacokinetic parameters were not influenced by age, gender, or hepatic impairment.

Based on oral, single-dose studies, renal insufficiency (creatinine clearance <50 mL/min) resulted in a 70-75% higher C<sub>max</sub> and AUC compared to normal subjects. Time to maximum concentration was unchanged.

Oral azelastine has been safely administered to over 1400 asthmatic subjects, supporting the safety of administering Astel® Nasal Spray to allergic rhinitis patients with asthma.

**Pharmacodynamics**

In a placebo-controlled study (95 subjects with allergic rhinitis), there was no evidence of an effect of Astel® Nasal Spray (2 sprays per nostril twice daily for 56 days) on cardiac repolarization as represented by the corrected QT interval (QTc) of the electrocardiogram. At higher oral exposures (≥4 mg twice daily), a nonclinically significant mean change on the QTc (≥3 millisecond increase) was observed.

Interaction studies investigating the cardiac repolarization effects of concomitantly administered oral azelastine hydrochloride and erythromycin or ketoconazole were conducted. Oral erythromycin had no effect on azelastine pharmacokinetics or QTc based on analysis of serial electrocardiograms. Ketoconazole interfered with the measurement of azelastine plasma levels; however, no effects on QTc were observed (see PRECAUTIONS, Drug Interactions).

**Clinical Trials**

**Seasonal Allergic Rhinitis**

**Trials Supporting Two Sprays Per Nostril Twice Daily**

U.S. placebo-controlled clinical trials of Astel® Nasal Spray included 322 patients with seasonal allergic rhinitis who received two sprays per nostril twice a day for up to 4 weeks. These trials included 55 pediatric patients aged 12 to 16 years. Astel® Nasal Spray showed significant improvement compared to placebo in the two primary efficacy variables- the Total Symptom Complex (TSC) and the Major Symptom Complex (MSC). The results for the MSC are shown in Table 1 as the mean change from Baseline in the average of individual symptoms of nose blows, sneezes, runny nose/sniffles, itchy nose, and watery eyes as assessed by patients on a 0-5 categorical scale.

**Table 1: Summary of Primary Efficacy\* Analyses for Pivotal Studies Supporting Two Sprays Per Nostril Twice Daily.**

	Astel®		Placebo		Outcomes	
	Mean (SD)		Mean (SD)		Difference between Treatments	P value
<b>Study 26: 12 Hour AM and PM Reflective MSC</b>						
Sample Size	N=63	N=60				
Baseline	11.48 (4.13)	10.84 (4.53)				
Change from Baseline	-3.05 (3.51)	-1.07 (3.52)	1.98		0.0024	
<b>Study 31: 12 Hour AM and PM Reflective MSC</b>						
Sample Size	N=63	N=63				
Baseline	12.50 (4.5)	12.18 (4.64)				
Change from Baseline	-4.10 (3.46)	-2.07 (4.01)	2.03		0.0023	
<b>Study 33: 12 Hour AM and PM Reflective MSC</b>						
Sample Size	N=66	N=66				
Baseline	12.04 (4.03)	11.66 (3.96)				
Change from Baseline	-3.31 (3.74)	-1.96 (3.57)	1.35		0.0374	

\* Average of individual symptoms of nose blows, sneezes, runny nose/sniffles, itchy nose, and watery eyes as assessed by patients on a 0-5 categorical scale.

**Trials Supporting One Spray Per Nostril Twice Daily**

Two hundred seventy five patients with seasonal allergic rhinitis received Astel® Nasal Spray one spray per nostril twice daily for 2 weeks in two placebo-controlled trials. The primary efficacy endpoint was the change from Baseline to Day 14 in the Total Allergic Symptom Score (TANSS) (the average of individual scores of runny nose, sneezing, itchy nose, and nasal congestion) as assessed by patients on a 0-3 categorical scale. Compared to placebo, Astel® Nasal Spray significantly improved the TANSS. The results are shown in Table 2.

**Table 2: Summary of Primary Efficacy\* Analyses for Pivotal Studies Supporting One Spray Per Nostril Twice Daily.**

	Astel®		Placebo		Outcomes	
	LS Mean (SD)		LS Mean (SD)		Difference between Treatments	P value
<b>Study 419: 12 Hour AM and PM Reflective TNS5</b>						
Sample Size	N=138	N=141				
Baseline	16.34 (4.222)	17.21 (4.316)				
Change from Baseline	-2.69 (4.789)	-1.31 (4.285)	1.38		0.0117	
<b>Study 420: 12 Hour AM and PM Reflective TNS5</b>						
Sample Size	N=137	N=136				
Baseline	16.62 (4.197)	16.84 (4.768)				
Change from Baseline	-3.68 (4.163)	-2.50 (4.011)	1.18		0.0173	

\* Average of individual symptoms of runny nose, sneezing, itchy nose, and nasal congestion as assessed by patients on a 0-3 categorical scale.

Two-week studies comparing the efficacy (and safety) of Astel® Nasal Spray two sprays per nostril twice daily versus one spray per nostril twice daily were not conducted.

**Other Supporting Studies**

In dose-ranging trials, administration of Astel® Nasal Spray, two sprays per nostril twice daily, resulted in a decrease in symptoms, which reached statistical significance from saline placebo within 3 hours after initial dosing and persisted over the 12-hour dosing interval.

There were no findings on nasal examination in an 8-week study that suggested any adverse effect of azelastine on the nasal mucosa.

**Vasomotor Rhinitis**

Two hundred sixteen patients with vasomotor rhinitis received Astel® Nasal Spray two sprays per nostril twice a day in two U.S. placebo controlled trials. These patients had vasomotor rhinitis for at least one year, negative skin tests to indoor and outdoor allergens, negative nasal smears for eosinophils, and negative sinus X-rays. Astel® Nasal Spray significantly improved a symptom complex comprised of rhinorrhea, post nasal drip, nasal congestion, and sneezing.

**INDICATIONS AND USAGE**

Astel® Nasal Spray is indicated for the treatment of the symptoms of seasonal allergic rhinitis such as rhinorrhea, sneezing, and nasal pruritus in adults and children 5 years and older, and for the treatment of the symptoms of vasomotor rhinitis, such as rhinorrhea, nasal congestion and postnasal drip in adults and children 12 years and older.

**CONTRAINDICATIONS**

Astel® Nasal Spray is contraindicated in patients with a known hypersensitivity to azelastine hydrochloride or any of its components.

**PRECAUTIONS**

**Activities Requiring Mental Alertness:** In clinical trials, the occurrence of somnolence has been reported in some patients taking Astel® Nasal Spray; due caution should therefore be exercised when driving a car or operating potentially dangerous machinery while using Astel® Nasal Spray. Concurrent use of Astel® Nasal Spray with alcohol or other CNS depressants should be avoided because additional reductions in alertness and additional impairment of CNS performance may occur.

**Information for Patients:** Patients should be instructed to use Astel® Nasal Spray only as prescribed. For the proper use of the nasal spray and to attain maximum improvement, the patient should read and follow carefully the accompanying patient instructions. Patients should be instructed to prime the delivery system before initial use and after storage for 3 or more days (see PATIENT INSTRUCTIONS FOR USE). Patients should also be instructed to store the bottle upright at room temperature with the pump tightly closed and out of the reach of children. In case of accidental ingestion by a young child, seek professional assistance or contact a poison control center immediately.

Patients should be advised against the concurrent use of Astel® Nasal Spray with other antihistamines without consulting a physician. Patients who are, or may become, pregnant should be told that this product should be used in pregnancy or during lactation only if the potential benefit justifies the potential risks to the fetus or nursing infant. Patients should be advised to assess their individual responses to Astel® Nasal Spray during pregnancy in any activity requiring mental alertness, such as driving a car or operating machinery. Patients should be advised that the concurrent use of Astel® Nasal Spray with alcohol or other CNS depressants may lead to additional reductions in alertness and impairment of CNS performance and should be avoided (see Drug Interactions).

**Drug Interactions:** Concurrent use of Astel® Nasal Spray with alcohol or other CNS depressants should be avoided because additional reductions in alertness and additional impairment of CNS performance may occur.

Cimetidine (400 mg twice daily) increased the mean C<sub>max</sub> and AUC of orally administered azelastine hydrochloride (4 mg twice daily) by approximately 65%. Ranitidine hydrochloride (150 mg twice daily) had no effect on azelastine pharmacokinetics.

Interaction studies investigating the cardiac effects, as measured by the corrected QT interval (QTc), of concomitantly administered oral azelastine hydrochloride and erythromycin or ketoconazole were conducted. Oral erythromycin (500 mg three times daily for seven days) had no effect on azelastine pharmacokinetics or QTc based on analyses of serial electrocardiograms. Ketoconazole (200 mg twice daily for seven days) interfered with the measurement of azelastine plasma concentrations; however, no effects on QTc were observed.

No significant pharmacokinetic interaction was observed with the coadministration of an oral 4 mg dose of azelastine hydrochloride twice daily and theophylline 300 mg or 400 mg twice daily.

**Carcinogenesis, Mutagenesis, Impairment of Fertility:** In 2 year carcinogenicity studies in rats and mice azelastine hydrochloride did not show evidence of carcinogenicity at oral doses up to 30 mg/kg and 25 mg/kg, respectively (approximately 240 and 100 times the maximum recommended daily intranasal dose in adults and children on a mg/m<sup>2</sup> basis).

Azelastine hydrochloride showed no genotoxic effects in the Ames test, DNA repair test, mouse lymphoma forward mutation assay, mouse micronucleus test, or chromosomal aberration test in rat bone marrow.

Reproduction and fertility studies in rats showed no effects on male or female fertility at oral doses up to 30 mg/kg (approximately 240 times the maximum recommended daily intranasal dose in adults on a mg/m<sup>2</sup> basis). At 68.6 mg/kg (approximately 560 times the maximum recommended daily intranasal dose in adults on a mg/m<sup>2</sup> basis), the duration of estrous cycles was prolonged and copulatory activity and the number of pregnancies were decreased. The numbers of corpora lutea and implantations were decreased; however, pre-implantation loss was not increased.

**Pregnancy Category C:** Azelastine hydrochloride has been shown to cause developmental toxicity. Treatment of mice with an oral dose of 68.6 mg/kg (approximately 280 times the maximum recommended daily intranasal dose in adults on a mg/m<sup>2</sup> basis) caused embryo-fetal death, malformations (cleft palate; short or absent tail; fused, absent or branched ribs), delayed ossification and decreased fetal weight. This dose also caused maternal toxicity as evidenced by decreased body weight. Neither fetal nor maternal effects occurred at a dose of 3 mg/kg (approximately 10 times the maximum recommended daily intranasal dose in adults on a mg/m<sup>2</sup> basis).

In rats, an oral dose of 30 mg/kg (approximately 240 times the maximum recommended daily intranasal dose in adults on a mg/m<sup>2</sup> basis) caused malformations (oligo- and brachyactylia), delayed ossification and skeletal variations, in the absence of maternal toxicity. At 68.6 mg/kg (approximately 560 times the maximum recommended daily intranasal dose in adults on a mg/m<sup>2</sup> basis) azelastine hydrochloride also caused embryo-fetal death and decreased fetal weight; however, the 68.6 mg/kg dose caused severe maternal toxicity. Neither fetal nor maternal effects occurred at a dose of 3 mg/kg (approximately 25 times the maximum recommended daily intranasal dose in adults on a mg/m<sup>2</sup> basis).

In rabbits, oral doses of 30 mg/kg and greater (approximately 500 times the maximum recommended daily intranasal dose in adults on a mg/m<sup>2</sup> basis) caused abortion, delayed ossification and decreased fetal weight; however, these doses also resulted in severe maternal toxicity. Neither fetal nor maternal effects occurred at a dose of 0.3 mg/kg (approximately 5 times the maximum recommended daily intranasal dose in adults on a mg/m<sup>2</sup> basis).

There are no adequate and well-controlled clinical studies in pregnant women. Astel® Nasal Spray should be used during pregnancy only if the potential benefit justifies the potential risk to the fetus.

**Nursing Mothers:** It is not known whether azelastine hydrochloride is excreted in human milk. Because many drugs are excreted in human milk, caution should be exercised when Astel® Nasal Spray is administered to a nursing woman.

**Pediatric Use:** The safety and effectiveness of Astel® Nasal Spray at a dose of 1 spray per nostril twice daily has been established for patients 5 through 11 years of age for the treatment of symptoms of seasonal allergic rhinitis. The safety of this dosage of Astel® Nasal Spray was established in well-controlled studies of this dose in 176 patients 5 to 12 years of age treated for up to 6 weeks. The efficacy of Astel® Nasal Spray at this dose is based on an extrapolation of the finding of efficacy in adults, on the likelihood that the disease course, pathophysiology and response to treatment are substantially similar in children compared to adults, and on supportive data from controlled clinical trials in patients 5 to 12 years of age at the dose of 1 spray per nostril twice daily. The safety and effectiveness of Astel® Nasal Spray in children 5 to 12 years of age has not been established.

**Geriatric Use:** Clinical studies of Astel® Nasal Spray did not include sufficient numbers of subjects aged 65 and over to determine whether they respond differently from younger subjects. Other reported clinical experience has not identified differences in responses between the elderly and younger patients. In general, dose selection for an elderly patient should be cautious, usually starting at the low end of the dosing range, reflecting the greater frequency of decreased hepatic, renal, or cardiac function, and of concomitant disease or other drug therapy.

**ADVERSE REACTIONS**

**Seasonal Allergic Rhinitis**

**Astel® Nasal Spray Two Sprays Per Nostril Twice Daily**

Adverse experience information for Astel® Nasal Spray is derived from six well-controlled, 2-day to 8-week clinical studies which included 391 patients who received Astel® Nasal Spray at a dose of 2 sprays per nostril twice daily. In placebo-controlled efficacy trials, the incidence of discontinuation due to adverse reactions in patients receiving Astel® Nasal Spray was not different from vehicle placebo (2.2% vs 2.8%, respectively). In these clinical studies, adverse events that occurred more often in patients treated with Astel® Nasal Spray versus vehicle placebo included bitter taste (19.7% vs 0.6%), somnolence (11.5% vs 5.4%), weight increase (2.0% vs 0%), and myalgia (1.5% vs 0%).

The following table contains adverse events that were reported with frequencies ≥2% in the Astel® Nasal Spray 2 sprays per nostril twice daily treatment group and more frequently than placebo in short-term (≤2 days) and long-term (2-8 weeks) clinical trials.

ADVERSE EVENT	Astel® Nasal Spray n = 391	Vehicle Placebo n = 353
Bitter Taste	19.7	0.6
Headache	14.8	12.7
Somnolence	11.5	5.4
Nasal Burning	4.1	1.7
Pharyngitis	3.8	2.8
Dry Mouth	2.8	1.7
Paroxysmal Sneezing	3.1	1.1
Nausea	2.8	1.1
Rhinitis	2.3	1.4
Fatigue	2.3	1.4
Dizziness	2.0	1.4
Epistaxis	2.0	1.4
Weight Increase	2.0	0.0

**Astel® Nasal Spray One Spray Per Nostril Twice Daily**

Adverse experience information for Astel® Nasal Spray at a dose of one spray per nostril twice daily is derived from two placebo-controlled 2-week clinical studies which included 276 patients. None of the patients receiving Astel® Nasal Spray were discontinued from these studies due to adverse reactions. Three patients receiving vehicle placebo were discontinued due to adverse reactions. Bitter taste was reported in 8.3% of patients compared to none in the placebo group. Somnolence was reported in 0.4% of patients compared to none in the placebo group.

A total of 176 patients 5 to 12 years of age were exposed to Astel® Nasal Spray at a dose of 1 spray each nostril twice daily in 3 placebo-controlled studies. In these studies, adverse events that occurred more frequently in patients treated with Astel® Nasal Spray than with placebo, and that were not represented in the adult adverse event table above include rhinitis/cold symptoms (17.0% vs 9.5%), cough (11.4% vs 8.3%), conjunctivitis (5.1% vs 1.8%), and asthma (4.5% vs 4.1%).

The following events were observed infrequently (<2% and exceeding placebo incidence) in patients who received Astel® Nasal Spray dosed at 1 or 2 sprays per nostril twice daily in U.S. clinical trials. Cardiovascular: flushing, hypertension, tachycardia.

Dermatological: contact dermatitis, eczema, hair and follicle infection, furunculosis, skin laceration.

Digestive: constipation, gastroenteritis, glossitis, ulcerative stomatitis, vomiting, increased SGPT, apthous stomatitis, diarrhea, toothache.

Metabolic and Nutritional: increased appetite.

Musculoskeletal: myalgia, temporomandibular dislocation, rheumatoid arthritis.

Neurological: hyperkinesia, hypoesthesia, vertigo.

Psychological: anxiety, depersonalization, depression, nervousness, sleep disorder, thinking abnormal.

Respiratory: bronchospasm, coughing, throat burning, laryngitis, bronchitis, dry throat, nocturnal dyspnea, nasopharyngitis, nasal congestion, pharyngolaryngeal pain, sinusitis, nasal dryness, paranasal sinus hypersecretion, post nasal drip.

Special Senses: conjunctivitis, eye abnormality, eye pain, watery eyes, taste loss.

Urogenital: albuminuria, amenorrhea, breast pain, hematuria, increased urinary frequency.

Whole Body: allergic reaction, back pain, herpes simplex, viral infection, malaise, pain in extremities, abdominal pain, pyrexia.

**ADVERSE REACTIONS**

**Vasomotor Rhinitis**

Adverse experience information for Astel® Nasal Spray is derived from two placebo-controlled clinical studies which included 216 patients who received Astel® Nasal Spray at a dose of 2 sprays per nostril twice daily for up to 28 days. The incidence of discontinuation due to adverse reactions in patients receiving Astel® Nasal Spray was not different from vehicle placebo (2.8% vs 2.9%, respectively).

The following adverse events were reported with frequencies ≥2% in the Astel® Nasal Spray treatment group and more frequently than placebo.

ADVERSE EVENT	Astel® Nasal Spray n = 216	Vehicle Placebo n = 210
Bitter Taste	19.4	2.4
Headache	7.9	7.6
Dysesthesia	7.9	3.3
Rhinitis	5.6	2.4
Epistaxis	3.2	2.4
Sinusitis	3.2	1.9
Somnolence	3.2	1.0

Events observed infrequently (<2% and exceeding placebo incidence) in patients who received Astel® Nasal Spray (2 sprays/nostril twice daily) in U.S. clinical trials in vasomotor rhinitis were similar to those observed in U.S. clinical trials in seasonal allergic rhinitis.

In controlled trials involving nasal and oral azelastine hydrochloride formulations, there were infrequent occurrences of hepatic transaminase elevations. The clinical relevance of these reports has not been established.

In addition, the following spontaneous adverse events have been reported during the marketing of Astel® Nasal Spray and causal relationship with the drug is unknown: anaphylactoid reaction, application site irritation, atrial fibrillation, chest pain, confusion, dyspnea, facial edema, involuntary muscle contractions, palpitations, parosmia, parosmia, parosmia, pruritus, rash, disturbance or loss of smell and/or taste, tolerance, urinary retention, vision abnormal and xerophthalmia.

**OVERDOSAGE**

There have been no reported overdoses with Astel® Nasal Spray. Acute overdose by adults with this dosage form is unlikely to result in clinically significant adverse events, other than increased somnolence, since one bottle of Astel® Nasal Spray contains 30 mg of azelastine hydrochloride. Clinical studies in adults with single doses of the oral formulation of azelastine hydrochloride (up to 16 mg) have not resulted in increased incidence of serious adverse events. General supportive measures should be employed if overdose occurs. There is no known antidote to Astel® Nasal Spray. Oral ingestion of antihistamines has the potential to cause serious adverse effects in young children. Accordingly, Astel® Nasal Spray should be kept out of the reach of children. Oral doses of 120 mg/kg and greater (approximately 460 times the maximum recommended daily intranasal dose in adults and children on a mg/m<sup>2</sup> basis) were lethal in mice. Responses seen prior to death were tremor, convulsions, decreased muscle tone, and salivation. In dogs, single oral doses as high as 10 mg/kg (approximately 260 times the maximum recommended daily intranasal dose in adults and children on a mg/m<sup>2</sup> basis) were well tolerated, but single oral doses of 20 mg/kg were lethal.

**DOSAGE AND ADMINISTRATION**

**Seasonal Allergic Rhinitis**

The recommended dose of Astel® Nasal Spray in adults and children 12 years and older with seasonal allergic rhinitis is one or two sprays per nostril twice daily. The recommended dose of Astel® Nasal Spray in children 5 years to 11 years of age is one spray per nostril twice daily.

**Vasomotor Rhinitis**

The recommended dose of Astel® Nasal Spray in adults and children 12 years and older with vasomotor rhinitis is two sprays per nostril twice daily.

Before initial use, the delivery system should be primed with 4 sprays or until a fine mist appears. When 3 or more days have elapsed since the last use, the pump should be reprimed with 2 sprays or until a fine mist appears.

**CAUTION: Avoid spraying in the eyes.**

Directions for Use: Illustrated patient instructions for proper use accompany each package of Astel® Nasal Spray.

**HOW SUPPLIED**

Astel® (azelastine hydrochloride) Nasal Spray, 137 mcg, (NDC 0037-0241-30) is supplied as a package containing 200 metered sprays in a high-density polyethylene (HDPE) bottle fitted with a metered-dose spray pump unit. A leaflet of patient instructions is also provided. The spray pump unit consists of a nasal spray pump fitted with a blue safety clip and a blue plastic dust cover.

The Astel® (azelastine hydrochloride) Nasal Spray, 137 mcg, bottle contains 30 mg (1 mg/mL) of azelastine hydrochloride. The bottle can deliver 200 metered sprays. Each spray delivers a mean of 0.137 mL solution containing 137 mcg of azelastine hydrochloride.

**Storage:** Store at controlled room temperature 20°-25°C (68°-77°F). Protect from freezing.

U.S. Patents 5,164,194; 0447,419.

Manufactured by

**MedPointe**  
pharmaceuticals®  
MedPointe Healthcare Inc.  
Somerset, New Jersey 08873

AST7065  
IN-023S6-